

# ENCONCEPT

→ ภาษาอังกฤษ สอบเข้า ม.1 ←

© ENCONCEPT

# READING

**Directions: Read the notice and answer the question.**

**For pain : Take two tablets**

1. Where you can see this notice?
  - a. On a soap box
  - b. On a food package
  - c. On an ambulance
  - d. On a medicine bottle

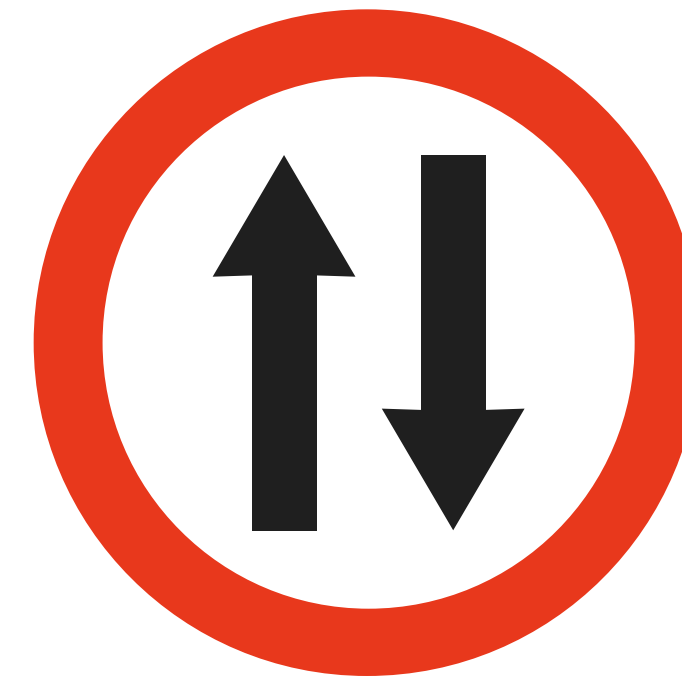
## Directions: Choose the best answer.

2. Which sign means "DO NOT ENTER"?

a.



b.



c.



d.



**Directions: Read the following information and answer the question.**

**“ESSENCE”**

**DRY CLEANING LIQUID**

**Instructions:**

**Mix one cupful of “ESSENCE” to 4 liters of water.**

**Soak garments for 5 minutes.**

**Gently rub and rinse completely with water.**



3. If you have a basin filled up with 16 liters of water, how much “ESSENCE” will you have to use?
- a. One cupful of “ESSENCE”
  - b. Two cupfuls of “ESSENCE”
  - c. Four cupfuls of “ESSENCE”
  - d. Eight cupfuls of “ESSENCE”
4. What is the definition of the word “completely”?
- a. tenderly
  - b. totally
  - c. intensely
  - d. smoothly

**Directions: Read the information below and answer the questions.**

## **Timetable**

<b>Depart</b>	<b>Arrive</b>	<b>Bus No. R3</b>
5.15 p.m. (From Bangkok)	6.15 p.m.	Samut Sakhon
	6.45 p.m.	Samut Songkhram
	7.15 p.m.	Ratchaburi
	8.15 p.m.	Petchaburi
	9.30 p.m.	Hua-Hin
	10.30 p.m.	Prachuap Khiri Khan



5. When the bus leave Bangkok?

a. At five fifty

b. At five fifteen

c. At six fifteen

d. At six forty-five

6. Susan and Jane take the 5.15 bus, and they get off the bus about three hours later. Where do they get off?

a. Hua-Hin

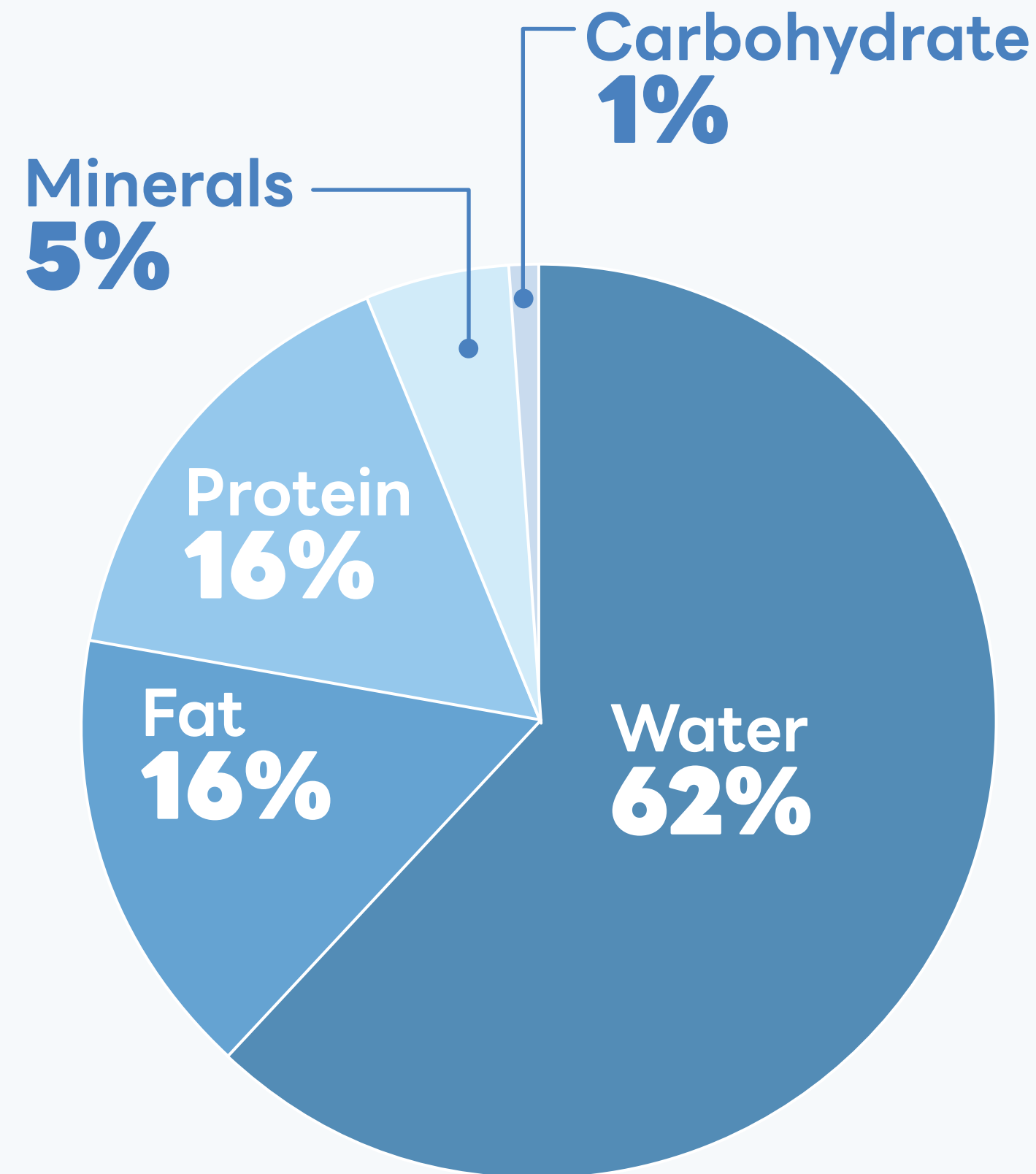
b. Ratchaburi

c. Petchaburi

d. Prachuap Khiri Khan

7. When Jane arrives at the destination, she looks at her watch. It tells her seven fifteen. Where is Jane now?
- a. Ratchaburi
  - b. Petchaburi
  - c. Samut Sakhon
  - d. Samut Songkhram

## Directions: Look at the pie chart and answer the questions.



Everyone's body is made of the same things.

- Our bodies contain water. We need to drink water every day.
- Our bodies also contain fat. Fat helps carry food to all parts of our bodies.
- Protein has two jobs. It keeps the body warm and it helps the body grow.
- Carbohydrate gives us energy so we can walk and run.
- Our bodies also contain minerals.

8. Protein is essential because it \_\_\_\_\_.
- a. provides energy to all cells in the body
  - b. helps carry food to all parts of the body
  - c. helps the body stay warm and supports the growth
  - d. keeps teeth healthy and remove bacteria
9. According to the chart, which sentence is **TRUE**?
- a. Our bodies contain minerals the most.
  - b. Our bodies contain protein and fat equally.
  - c. Our bodies contain water as much as carbohydrate.
  - d. Our bodies contain water up to 60 percent.

**Directions: Choose the best answer for each question.**

## Passage 1

Harbin is one of China's coldest cities. In winter, temperatures can drop as low as minus 35 degrees centigrade. Despite this harsh climate, the city has turned itself into a popular winter tourist destination. Visitors arrive from across Asia to experience the cold and see the city's ice sculptures. Animals, people, even famous buildings are turned into intricate sculptures that are lit up all night.



But, there's a problem—winters just aren't as cold as they used to be. Last year, Harbin had its warmest year since records began. And that means the city's famous ice sculptures are melting earlier.

The ice festival traditionally lasts until the end of February. But this year, there are fears the ice will have melted long before then. And this is not just a worry for environmentalists. Harbin's ice festival is the city's biggest source of income. If the ice goes, so do the tourists.

10. What does the word “harsh” in the first paragraph mean?
- a. easy to live
  - b. cold but nice
  - c. difficult to live
  - d. warm and nice
11. What is the main idea of this passage?
- a. The winter temperature in Harbin remain the same.
  - b. The changes in temperature are affecting the ice festival in Harbin.
  - c. Harbin, in winter, is the coldest city in China.
  - d. Harbin turns itself into a tourist destination only because of its popularity.



12. What worries people of Harbin?

a. The tourists

b. The very cold winter

c. The rising temperature

d. The intricate sculptures

13. What does the word "then" (paragraph 3) refer to?

a. this year

b. last year

c. the winter

d. the end of February

14. What should be the best title for this passage?
- a. Chinese Ice Sculptures Melting
  - b. Famous Tourist Destinations in China
  - c. Tourism and Environment Change
  - d. Popular Chinese Winter Festivals



**ENCONCEPT**