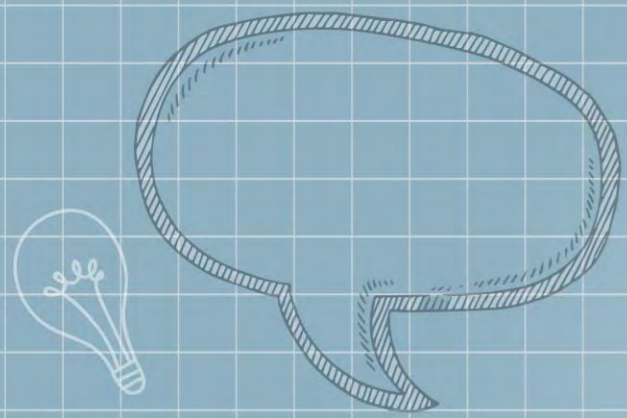
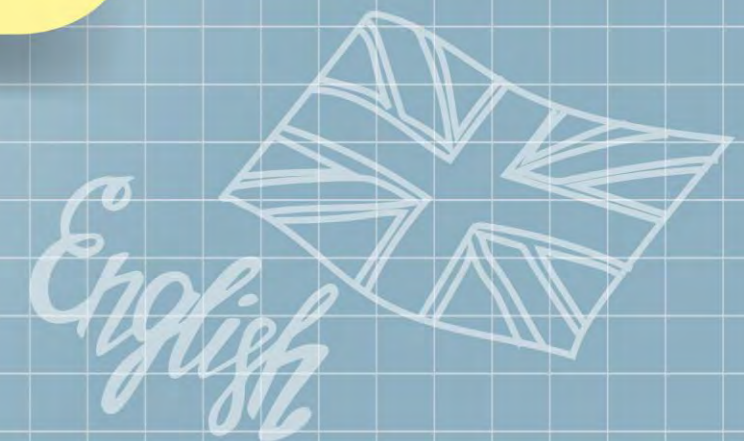
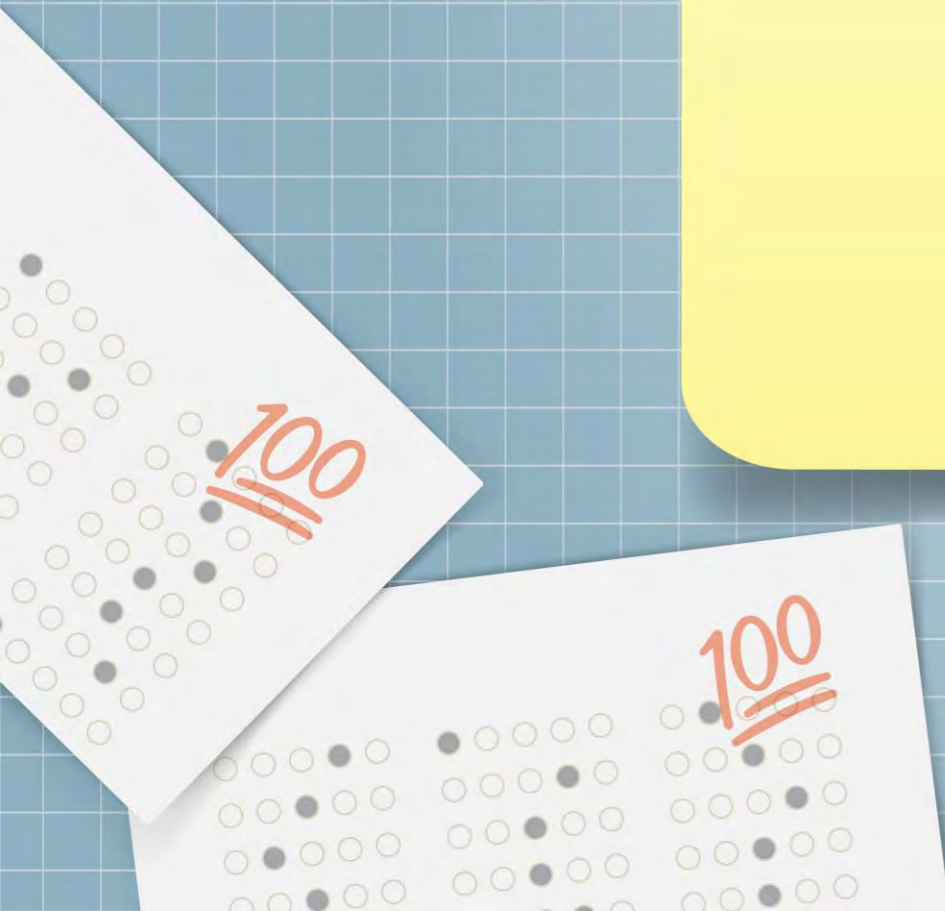
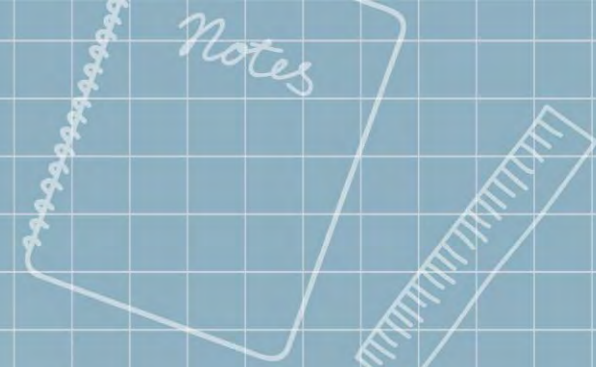


General Knowledge Festival



Festival

1. On October 31, children celebrate Halloween.

What do they usually do?

- 1. They splash water on each other.**
- 2. They send handmade cards to their fathers.**
- 3. They give jasmine flowers to their mothers.**
- 4. They dress like ghosts.**

2. Daisy and Megan are making pumpkins like ghosts. They are celebrating the festival.

What festival is it?



- 1. Easter**
- 2. Christmas**
- 3. Halloween**
- 4. Thanksgiving**

3. What can you see on New Year's Eve?

1.



2.



3.



4.



Questions 4 – 5

Mother's Day is the day when we show love, respect, and thanks to our mothers. In the United States, Mother's Day is celebrated on the second Sunday in May. Children prepare special gifts for their mothers. Adult children also visit their mothers and take them out for lunch or dinner.

4. When is Mother's Day in the United States?

- 1. 2 May**
- 2. 12 August**
- 3. the second Sunday in May**
- 4. any Sunday in May**

Mother's Day is the day when we show love, respect, and thanks to our mothers. In the United States, Mother's Day is celebrated on the second Sunday in May. Children prepare special gifts for their mothers. Adult children also visit their mothers and take them out for lunch or dinner.

4. When is Mother's Day in the United States?

- 1. 2 May**
- 2. 12 August**
- 3. the second Sunday in May**
- 4. any Sunday in May**

5. On Mother's Day, people in the United States do all of the following EXCEPT _____.

- 1. giving their mothers gifts**
- 2. going to see their mothers**
- 3. having meals with their mothers**
- 4. preparing jasmines for their mothers**

1. giving their mothers gifts

Mother's Day is the day when we show love, respect, and thanks to our mothers. In the United States, Mother's Day is celebrated on the second Sunday in May. Children prepare special gifts for their mothers. Adult children also visit their mothers and take them out for lunch or dinner.

2. going to see their mothers

Mother's Day is the day when we show love, respect, and thanks to our mothers. In the United States, Mother's Day is celebrated on the second Sunday in May. Children prepare special gifts for their mothers. Adult children also visit their mothers and take them out for lunch or dinner.

3. having meals with their mothers

Mother's Day is the day when we show love, respect, and thanks to our mothers. In the United States, Mother's Day is celebrated on the second Sunday in May. Children prepare special gifts for their mothers. Adult children also visit their mothers and take them out for lunch or dinner.

4. preparing jasmines for their mothers

Mother's Day is the day when we show love, respect, and thanks to our mothers. In the United States, Mother's Day is celebrated on the second Sunday in May. Children prepare special gifts for their mothers. Adult children also visit their mothers and take them out for lunch or dinner.

5. On Mother's Day, people in the United States do all of the following EXCEPT _____.

- 1. giving their mothers gifts**
- 2. going to see their mothers**
- 3. having meals with their mothers**
- 4. preparing jasmines for their mothers**

Questions 6 – 7

Chinese people celebrate New Year by handing out red envelopes filled with cash to children. Red is the symbol of luck in Chinese culture, so red envelopes are used during Chinese New Year. Other envelope colors are used for other types of occasions. For example, white envelopes are used for funerals.

6. Which sentence is correct?

- 1. Children receive money during Chinese New Year.**
- 2. Red has a negative meaning in Chinese culture.**
- 3. Chinese people use red in all kinds of events.**
- 4. Chinese children must paint their hands red during New Year.**

1. Children receive money during Chinese New Year.

Chinese people celebrate New Year by handing out red envelopes filled with cash to children. Red is the symbol of luck in Chinese culture, so red envelopes are used during Chinese New Year. Other envelope colors are used for other types of occasions. For example, white envelopes are used for funerals.

2. Red has a negative meaning in Chinese culture.

Chinese people celebrate New Year by handing out red envelopes filled with cash to children. Red is the symbol of luck in Chinese culture, so red envelopes are used during Chinese New Year. Other envelope colors are used for other types of occasions. For example, white envelopes are used for funerals.

3. Chinese people use red in all kinds of events.

Chinese people celebrate New Year by handing out red envelopes filled with cash to children. Red is the symbol of luck in Chinese culture, so red envelopes are used during Chinese New Year. Other envelope colors are used for other types of occasions. For example, white envelopes are used for funerals.

4. Chinese children must pain their hands red during New Year.

Chinese people celebrate New Year by handing out red envelopes filled with cash to children. Red is the symbol of luck in Chinese culture, so red envelopes are used during Chinese New Year. Other envelope colors are used for other types of occasions. For example, white envelopes are used for funerals.

6. Which sentence is correct?

- 1. Children receive money during Chinese New Year.**
- 2. Red has a negative meaning in Chinese culture.**
- 3. Chinese people use red in all kinds of events.**
- 4. Chinese children must paint their hands red during New Year.**

7. According to the passage, when are white envelopes used in Chinese culture?

- 1. When someone is born.**
- 2. When someone dies.**
- 3. When there is a fun festival.**
- 4. White envelopes are never used.**

Chinese people celebrate New Year by handing out red envelopes filled with cash to children. Red is the symbol of luck in Chinese culture, so red envelopes are used during Chinese New Year. Other envelope colors are used for other types of occasions. For example, white envelopes are used for funerals.

7. According to the passage, when are white envelopes used in Chinese culture?

- 1. When someone is born.**
- 2. When someone dies.**
- 3. When there is a fun festival.**
- 4. White envelopes are never used.**

Questions 8 – 11

The Vegetarian Festival is celebrated in Thailand annually. You can find the celebration in places throughout Thailand where there are large Chinese communities. During the festival, you are not allowed to eat meat and animal products, so you cannot *consume* milk and eggs. You are also prohibited from eating some kinds of vegetables. Restaurants fly yellow flags to inform customers that they serve vegetarian dishes.

8. What does “consume” mean?

- 1. eat**
- 2. produce**
- 3. get rid of**
- 4. digest**

The Vegetarian Festival is celebrated in Thailand annually. You can find the celebration in places throughout Thailand where there are large Chinese communities. During the festival, you are not allowed to eat meat and animal products, so you cannot *consume* milk and eggs. You are also prohibited from eating some kinds of vegetables. Restaurants fly yellow flags to inform customers that they serve vegetarian dishes.

8. What does “consume” mean?

- 1. eat**
- 2. produce**
- 3. get rid of**
- 4. digest**

9. How often is the Vegetarian Festival celebrated?

- 1. Once a month.**
- 2. Once a year.**
- 3. Twice a year.**
- 4. Every two years.**

The Vegetarian Festival is celebrated in Thailand annually. You can find the celebration in places throughout Thailand where there are large Chinese communities. During the festival, you are not allowed to eat meat and animal products, so you cannot *consume* milk and eggs. You are also prohibited from eating some kinds of vegetables. Restaurants fly yellow flags to inform customers that they serve vegetarian dishes.

9. How often is the Vegetarian Festival celebrated?

- 1. Once a month.**
- 2. Once a year.**
- 3. Twice a year.**
- 4. Every two years.**

10. Which sentence is correct?

- 1. Chinese cuisine is always vegetarian.**
- 2. There are no Chinese people in Thailand.**
- 3. If you see a yellow flag in front of a restaurant, you can order meat there.**
- 4. The Vegetarian Festival originated in Chinese culture.**

1. Chinese cuisine is always vegetarian.

The Vegetarian Festival is celebrated in Thailand annually.

You can find the celebration in places throughout Thailand

where there are large Chinese communities. During the

festival, you are not allowed to eat meat and animal

products, so you cannot *consume* milk and eggs. You are

also prohibited from eating some kinds of vegetables.

Restaurants fly yellow flags to inform customers that they

serve vegetarian dishes.

2. There are no Chinese people in Thailand

The Vegetarian Festival is celebrated in Thailand annually.

You can find the celebration in places throughout Thailand

where there are large Chinese communities. During the

festival, you are not allowed to eat meat and animal

products, so you cannot *consume* milk and eggs. You are

also prohibited from eating some kinds of vegetables.

Restaurants fly yellow flags to inform customers that they

serve vegetarian dishes.

3. If you see a yellow flag in front of a restaurant, you can order meat there.

The Vegetarian Festival is celebrated in Thailand annually. You can find the celebration in places throughout Thailand where there are large Chinese communities. During the festival, you are not allowed to eat meat and animal products, so you cannot *consume* milk and eggs. You are also prohibited from eating some kinds of vegetables. Restaurants fly yellow flags to inform customers that they serve vegetarian dishes.

4. The Vegetarian Festival originated in Chinese culture.

The Vegetarian Festival is celebrated in Thailand annually.

You can find the celebration in places throughout Thailand

where there are large Chinese communities. During the

festival, you are not allowed to eat meat and animal

products, so you cannot *consume* milk and eggs. You are

also prohibited from eating some kinds of vegetables.

Restaurants fly yellow flags to inform customers that they

serve vegetarian dishes.

10. Which sentence is correct?

- 1. Chinese cuisine is always vegetarian.**
- 2. There are no Chinese people in Thailand.**
- 3. If you see a yellow flag in front of a restaurant, you can order meat there.**
- 4. The Vegetarian Festival originated in Chinese culture.**

11. What can you eat during the Vegetarian Festival?

- 1. Meat**
- 2. Milk and eggs**
- 3. All kinds of vegetables**
- 4. All kinds of fruits**

The Vegetarian Festival is celebrated in Thailand annually. You can find the celebration in places throughout Thailand where there are large Chinese communities. During the festival, you are not allowed to eat meat and animal products, so you cannot *consume* milk and eggs. You are also prohibited from eating some kinds of vegetables. Restaurants fly yellow flags to inform customers that they serve vegetarian dishes.

11. What can you eat during the Vegetarian Festival?

- 1. Meat**
- 2. Milk and eggs**
- 3. All kinds of vegetables**
- 4. All kinds of fruits**

Questions 12 – 15

On 14 February, we celebrate Valentine's Day by giving flowers, candies, and cards to people whom we love. It is believed that the tradition started in the Roman Empire. Emperor Claudius, who wanted strong and brave soldiers, did not want men to get married because he believed marriage made them weak. However, Valentine, who was then a priest, performed secret wedding ceremonies so that men could marry their sweethearts.

Unfortunately, Claudius found out and put Valentine to death on 14 February. A lot of people also wonder why red is the symbol of Valentine's Day. The answer is that Valentine's Day is the day of love, love comes from the heart, which is the organ that pumps that blood, and the blood is red.

12. On Valentine's Day, we give the following things to people we love EXCEPT _____.

1. flowers

2. candies

3. cards

4. soldiers

On 14 February, we celebrate Valentine's Day by giving flowers, candies, and cards to people whom we love.

It is believed that the tradition started in the Roman Empire.

Emperor Claudius, who wanted strong and brave soldiers, did not want men to get married because he believed marriage made them weak. However, Valentine, who was then a priest, performed secret wedding ceremonies so that men could marry their sweethearts.

Unfortunately, Claudius found out and put Valentine to death on 14 February. A lot of people also wonder why red is the symbol of Valentine's Day. The answer is that Valentine's Day is the day of love, love comes from the heart, which is the organ that pumps that blood, and the blood is red.

12. On Valentine's Day, we give the following things to people we love EXCEPT _____.

1. flowers

2. candies

3. cards

4. soldiers

13. What did Claudius believe?

- 1. Married men could not become good soldiers.**
- 2. Men had the rights to marry their sweethearts.**
- 3. Marriage made women weak.**
- 4. Valentine did the right thing.**

1. Married men could not become good soldiers.

On 14 February, we celebrate Valentine's Day by giving flowers, candies, and cards to people whom we love.

It is believed that the tradition started in the Roman Empire. Emperor Claudius, who wanted strong and brave soldiers, did not want men to get married because he believed marriage made them weak. However, Valentine, who was then a priest, performed secret wedding ceremonies so that men could marry their sweethearts.

Unfortunately, Claudius found out and put Valentine to death on 14 February. A lot of people also wonder why red is the symbol of Valentine's Day. The answer is that Valentine's Day is the day of love, love comes from the heart, which is the organ that pumps that blood, and the blood is red.

2. Men had the rights to marry their sweethearts.

On 14 February, we celebrate Valentine's Day by giving flowers, candies, and cards to people whom we love.

It is believed that the tradition started in the Roman Empire. Emperor Claudius, who wanted strong and brave soldiers, did not want men to get married because he believed marriage made them weak. However, Valentine, who was then a priest, performed secret wedding ceremonies so that men could marry their sweethearts.

Unfortunately, Claudius found out and put Valentine to death on 14 February. A lot of people also wonder why red is the symbol of Valentine's Day. The answer is that Valentine's Day is the day of love, love comes from the heart, which is the organ that pumps that blood, and the blood is red.

3. Marriage made women weak.

On 14 February, we celebrate Valentine's Day by giving flowers, candies, and cards to people whom we love.

It is believed that the tradition started in the Roman Empire. Emperor Claudius, who wanted strong and brave soldiers, did not want men to get married because he believed marriage made them weak. However, Valentine, who was then a priest, performed secret wedding ceremonies so that men could marry their sweethearts.

Unfortunately, Claudius found out and put Valentine to death on 14 February. A lot of people also wonder why red is the symbol of Valentine's Day. The answer is that Valentine's Day is the day of love, love comes from the heart, which is the organ that pumps that blood, and the blood is red.

4. Valentine did the right thing.

On 14 February, we celebrate Valentine's Day by giving flowers, candies, and cards to people whom we love.

It is believed that the tradition started in the Roman Empire. Emperor Claudius, who wanted strong and brave soldiers, did not want men to get married because he believed marriage made them weak. However, Valentine, who was then a priest, performed secret wedding ceremonies so that men could marry their sweethearts.

Unfortunately, Claudius found out and put Valentine to death on 14 February. A lot of people also wonder why red is the symbol of Valentine's Day. The answer is that Valentine's Day is the day of love, love comes from the heart, which is the organ that pumps that blood, and the blood is red.

13. What did Claudius believe?

- 1. Married men could not become good soldiers.**
- 2. Men had the rights to marry their sweethearts.**
- 3. Marriage made women weak.**
- 4. Valentine did the right thing.**

14. Which of the following describes Claudius?

- 1. Kind**
- 2. Cruel**
- 3. Lazy**
- 4. Quiet**

On 14 February, we celebrate Valentine's Day by giving flowers, candies, and cards to people whom we love.

It is believed that the tradition started in the Roman Empire.

Emperor Claudius, who wanted strong and brave soldiers, did not want men to get married because he believed marriage made them weak. However, Valentine, who was then a priest, performed secret wedding ceremonies so that men could marry their sweethearts.

Unfortunately, Claudius found out and put Valentine to death on 14 February. A lot of people also wonder why red is the symbol of Valentine's Day. The answer is that Valentine's Day is the day of love, love comes from the heart, which is the organ that pumps that blood, and the blood is red.

14. Which of the following describes Claudius?

- 1. Kind**
- 2. Cruel**
- 3. Lazy**
- 4. Quiet**

15. Why was red chosen as the symbol of Valentine's Day?

- 1. Red is the symbol of Valentine's Day.**
- 2. Love and blood both originate from the heart.**
- 3. The blood pumps the heart.**
- 4. Valentine's Day is the day when we celebrate love.**

On 14 February, we celebrate Valentine's Day by giving flowers, candies, and cards to people whom we love.

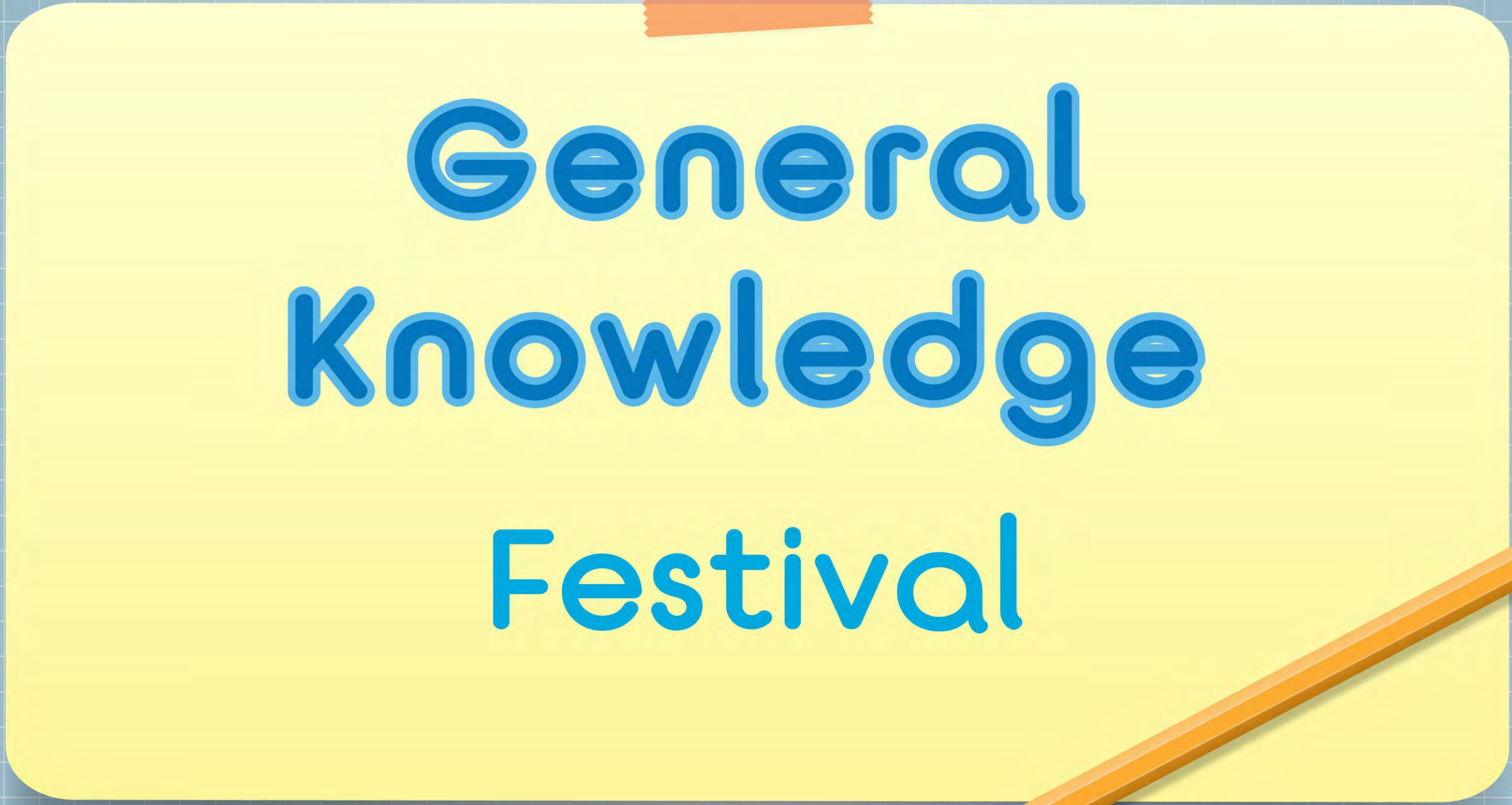
It is believed that the tradition started in the Roman Empire.

Emperor Claudius, who wanted strong and brave soldiers, did not want men to get married because he believed marriage made them weak. However, Valentine, who was then a priest, performed secret wedding ceremonies so that men could marry their sweethearts.

Unfortunately, Claudius found out and put Valentine to death on 14 February. A lot of people also wonder why red is the symbol of Valentine's Day. The answer is that Valentine's Day is the day of love, love comes from the heart, which is the organ that pumps that blood, and the blood is red.

15. Why was red chosen as the symbol of Valentine's Day?

- 1. Red is the symbol of Valentine's Day.**
- 2. Love and blood both originate from the heart.**
- 3. The blood pumps the heart.**
- 4. Valentine's Day is the day when we celebrate love.**




General Knowledge Festival



100



English



100



100

